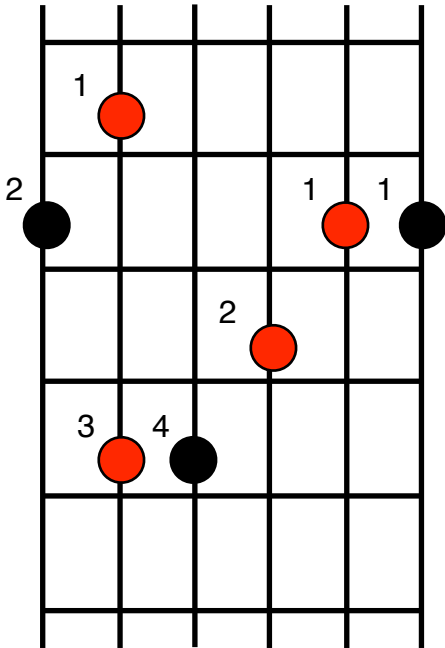


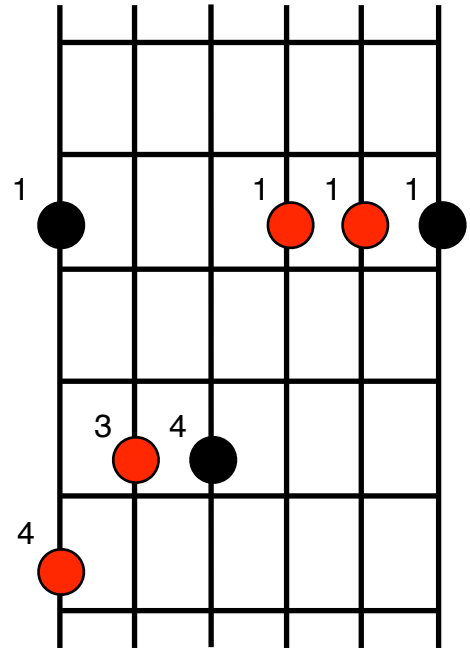
Grade 3 Arpeggios

davejonesguitar.co.uk

Major Arpeggio



Minor Arpeggio



The arpeggios shown above are the required arpeggios in the grade 3 RGT electric guitar exam. They should be played ascending and descending[low to high] without repeating the top note. The root notes are all on the thick E string, the table below shows the root notes along the E string.

1	2	3	4	5	6	7	8	9	10	11	12
F	F# Gb	G	G# Ab	A	A# Bb	B	C	C# Db	D	D# Eb	E