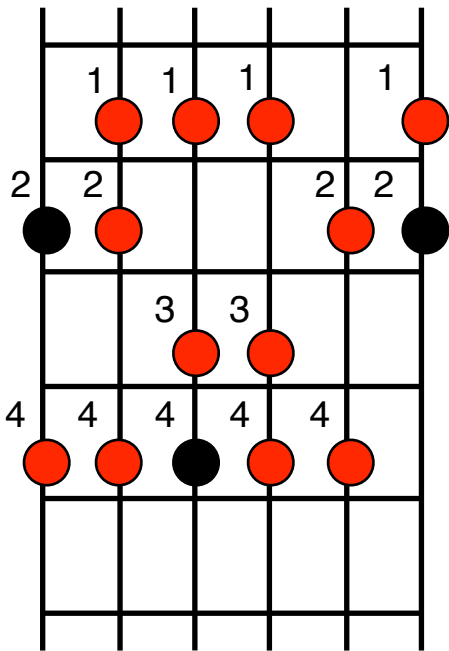


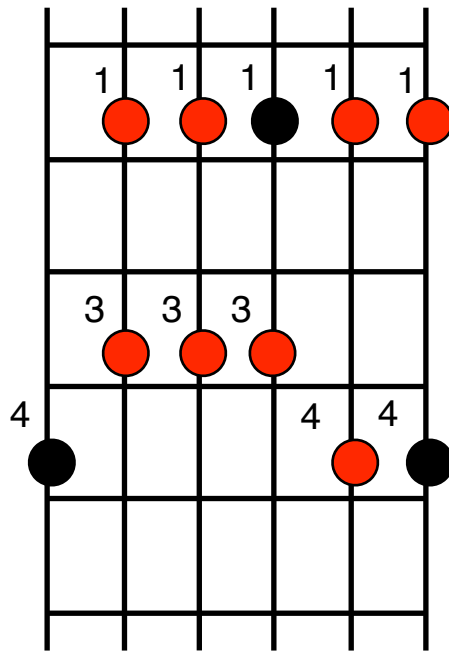
Grade 2 Scales

davejonesguitar.co.uk

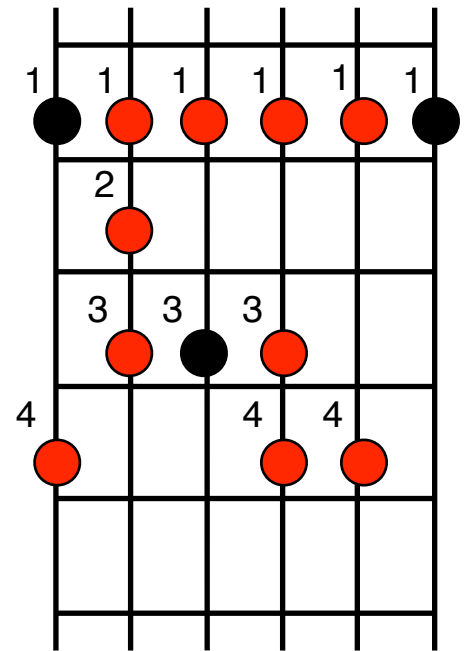
Major Scale



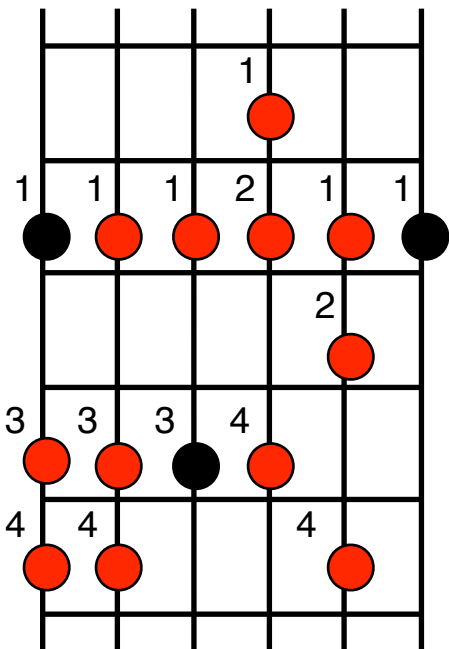
Major Pentatonic Scale



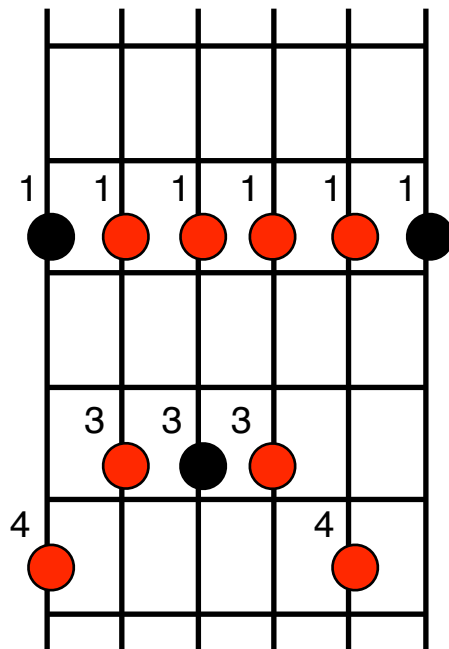
Blues Scale



Natural Minor Scale



Minor Pentatonic Scale



These are the 2 octave scale shapes required in the RGT grade 2 electric guitar exam.

All are transpositional, the root note is shown by the black dot on the thick E string. The table below shows which fret to find the root notes for the grade 2 exam. Practice each scale shape in the following keys.

The major scale: keys C and G
 The blues scale: keys A and G
 The minor pentatonic: key Bm
 The major pentatonic: key D
 The natural minor: key Am

1	2	3	4	5	6	7	8	9	10	11	12
		G		A		B	C		D		